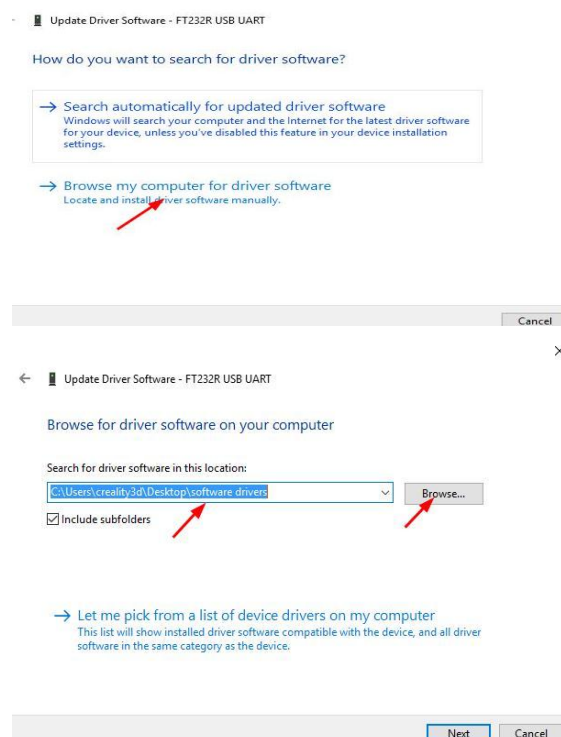
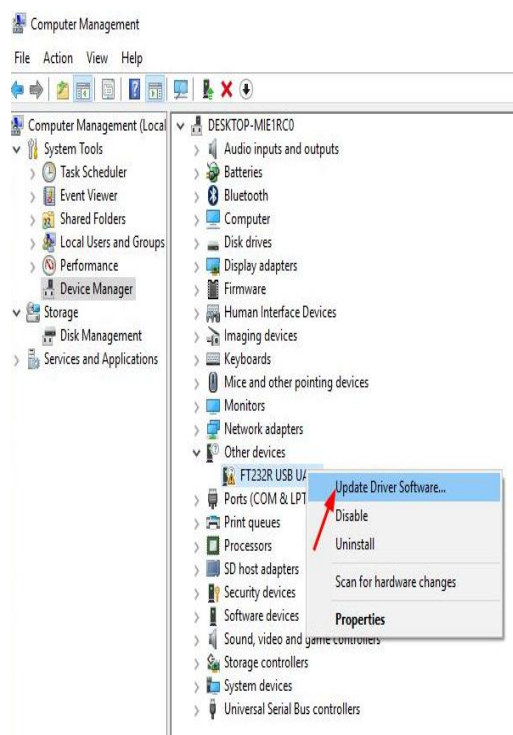


# Online printing

When you want to online printing, computer and machine need to be connected through USB line. During printing, computer can not power off, the computer screen saver or sleep, to prevent data transmission failure, use relatively cumbersome, are generally not recommended for users.

Load model into software, set all parameters well.

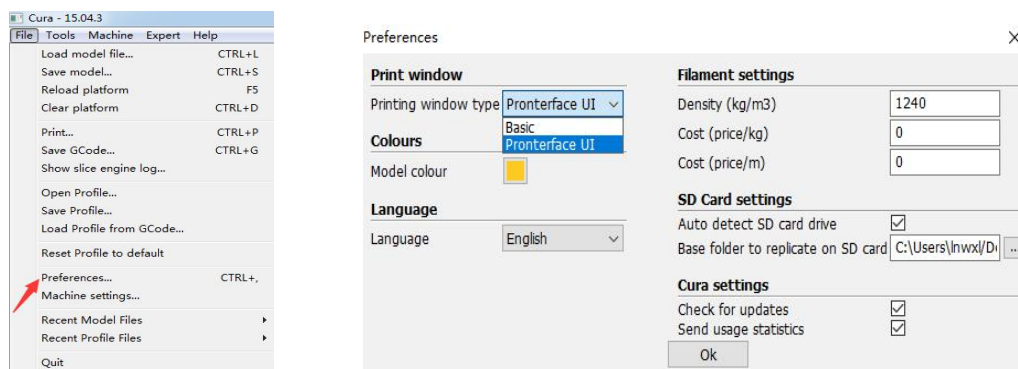
1. Turn on the power, connect computer and machine through USB line, will automatically install the driver. If it does not install driver, you can do it by yourself. Driver is in the SD card. Right-click "This PC" from the desktop, choose "Properties (Manager)" >> "Device manager". Find the serial port that shows yellow. Right-click choose "Update driver software" >> "Browse my computer for driver software".



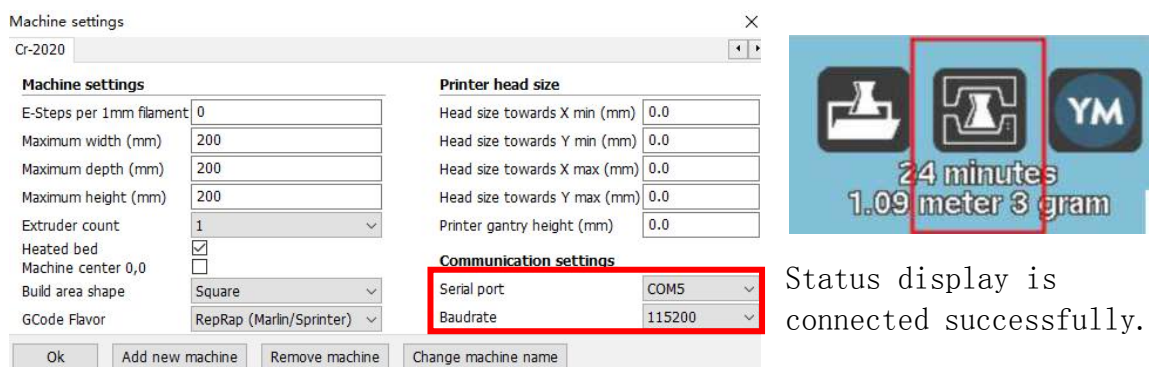
2. "Browse", find the location of USB driver, click "Next". Generally, the serial port (COM) you need update driver is the max number.

3. After update driver, open the software, you need do some settings, so you can control machine through computer. "File" >> "Preferences".

"Printing window type" >> "Pronterface UI".

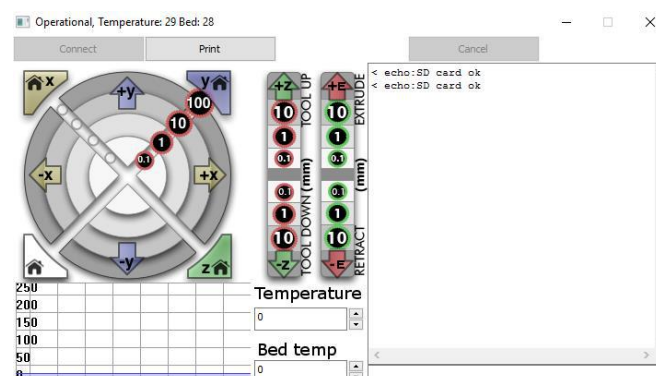


4. "Machine" >> "Machine settings", "Serial port" chooses the max number one. "Baudrate" is "115200".



Status display is connected successfully.

5. Click it, or "Ctrl+P". "Print" is not gray, you are successful.



Click "print" to start printing. Printing process should be careful to avoid printing failure.